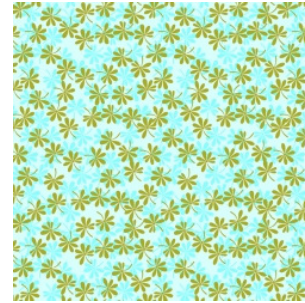
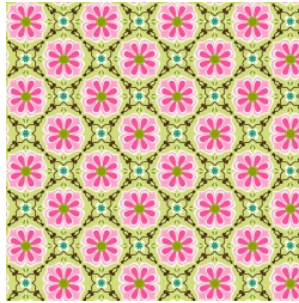




2012 Foothills Piecemakers Quilting Guild and Studio e Patchwork Challenge

www.foothillsquilts.com

A challenge kit containing the competition rules, entry form challenge fabric and list of prizes can be obtained from...



Foothills Piecemakers Quilting Guild Challenge
C/O Darlene Roberts
535 Mahaffey Road
Greer, SC 29651

Email: fpqqpatchworkchallenge@charter.net

All entrants may contact Darlene prior on the above email or mailing address for more information.

Rules & Conditions

Quilters are invited to take up the challenge of producing a quilt, wall hanging or quilted item no larger than 30 inches on any side.

90% of the given challenge fabric (a piece approximately 18 inches square must be used from each fabric.)

Kits cost \$15.00 –request form available at www.foothillsquilts.com

Entry form for quilted item will be mailed with kit.

All checks or money orders must be made payable to FPQG

All entries must be received by midnight, March 15, 2012

(Quilted items must arrive on or before this date)

The quilts will be on display at the 2012 quilt show

Morningside Baptist Church
Greenville, SC, USA
Friday April 20 and Saturday April 21 2012

9:30am – 5:00pm



2012 Foothills Piecemakers Quilting Guild and Studio e Patchwork Challenge

www.foothillsquilts.com

Kit cost, includes challenge fabrics, rules and guidelines, \$15.00 per kit entered.

Mail check or money order to:

FPQG
C/O Darlene Roberts
535 Mahaffey Road
Greer, SC 29651

Please send me _____ number of kits. Enclosed is a check or money order in the amount of \$_____.
Check or money order needs to be made payable to FPQG (Foothills Piecemakers Quilt Guild). Kits will be
mailed after September 1, 2011.

Name: _____

Address: _____

City: _____ State: _____ Zip: _____

I understand a copy of the rules and entry form will be sent with kit.

Signature

Date